

Please check the examination details below before entering your candidate information

Candidate surname

Other names

Centre Number

Candidate Number

--	--	--	--	--

--	--	--	--

Pearson Edexcel International Advanced Level

Time 1 hour 20 minutes

Paper
reference

WPH16/01

Physics

International Advanced Level

UNIT 6: Practical Skills in Physics II

You must have:

Scientific calculator, ruler

Total Marks

Instructions

- Use **black** ink or ball-point pen.
- If pencil is used for diagrams/sketches/graphs it must be dark (HB or B).
- **Fill in the boxes** at the top of this page with your name, centre number and candidate number.
- Answer **all** questions.
- Answer the questions in the spaces provided
– *there may be more space than you need.*
- **Show all your working out** in calculations and **include units** where appropriate.

Information

- The total mark for this paper is 50.
- The marks for **each** question are shown in brackets
– *use this as a guide as to how much time to spend on each question.*
- The list of data, formulae and relationships is printed at the end of this booklet.

Advice

- Read each question carefully before you start to answer it.
- Try to answer every question.
- Check your answers if you have time at the end.

Turn over ►

P71882A

©2022 Pearson Education Ltd.

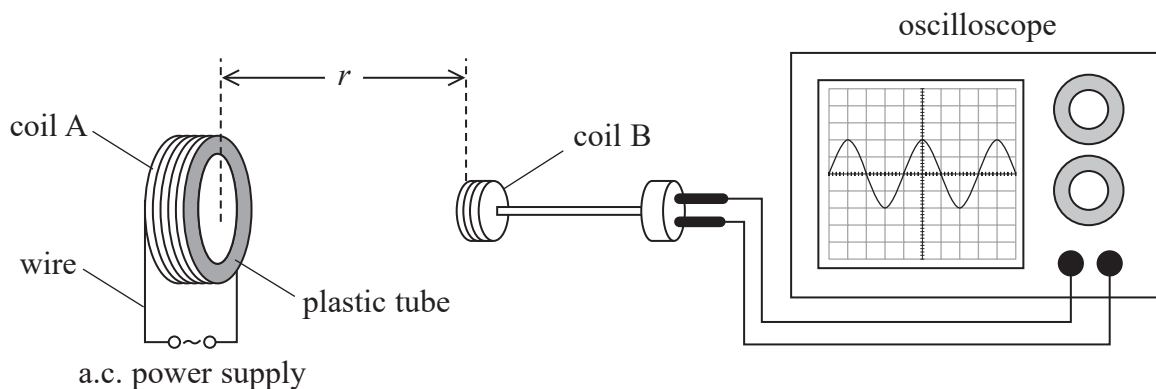
B:1/1/1/1/




Pearson

Answer ALL questions.

- 1 A student investigated the magnetic field produced by a current-carrying coil, coil A. She made coil A by wrapping a wire around a plastic tube. Coil A was connected to an alternating current (a.c.) power supply. A second coil, coil B, was placed in the magnetic field and connected to an oscilloscope as shown.



- (a) Describe one safety issue and how it should be dealt with.

(2)

.....

.....

.....

.....

- (b) The distance r between the two coils varied between 2 cm and 10 cm.

Explain why using Vernier calipers would be better than a metre rule to measure r .

You should include calculations in your answer.

(3)

.....

.....

.....

.....

.....

.....

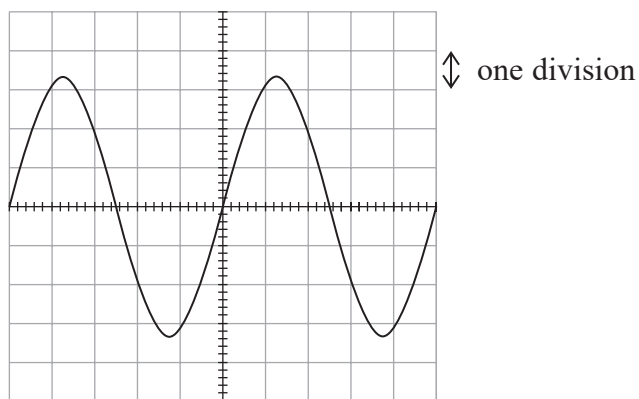
DO NOT WRITE IN THIS AREA

DO NOT WRITE IN THIS AREA

DO NOT WRITE IN THIS AREA



- (c) When the a.c. power supply was switched on, an e.m.f. E was induced across coil B. The variation in E is shown on the oscilloscope screen below.



The y-scale was set to 100 mV per division.

Describe how an accurate maximum value for E can be determined from the oscilloscope screen.

(3)

.....

.....

.....

.....

.....

.....



- (d) The student measured values of r with Vernier calipers and determined corresponding maximum values of E .

The student's values are shown in the table.

r / cm	2	4	6	8
E / V	320	40	11.9	5

Criticise the recording of this data.

(2)

(Total for Question 1 = 10 marks)



DO NOT WRITE IN THIS AREA

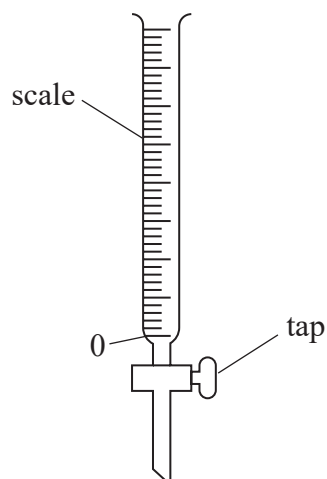
DO NOT WRITE IN THIS AREA

DO NOT WRITE IN THIS AREA

BLANK PAGE



- 2 A student used a transparent tube to measure a volume of liquid, as shown. Opening the tap allows liquid to flow out of the tube at a controlled rate.



When the tap is open, the volume V of liquid inside the tube decreases with time t according to the relationship

$$V = V_0 e^{-bt}$$

where V_0 is the initial volume of liquid in the tube and b is a constant.

- (a) Explain why a graph of $\ln V$ against t should be used to test this relationship.

(2)

.....

.....

.....

.....



3 A liquid is placed inside a closed container. Some of the liquid evaporates.

The pressure of the vapour above the surface of the liquid increases to a maximum value. This maximum pressure is called the saturated vapour pressure.

(a) The table shows data for the saturated vapour pressure P at different absolute temperatures T .

P / kPa	T / K		
7.8	308		
17.0	323		
34.6	338		
66.1	353		
120.1	368		
208.1	383		

(i) Plot a graph of $\log P$ against $\frac{1}{T}$ on the grid opposite. Use the additional columns for your processed data.

(6)

(ii) Determine the gradient of the graph.

(3)

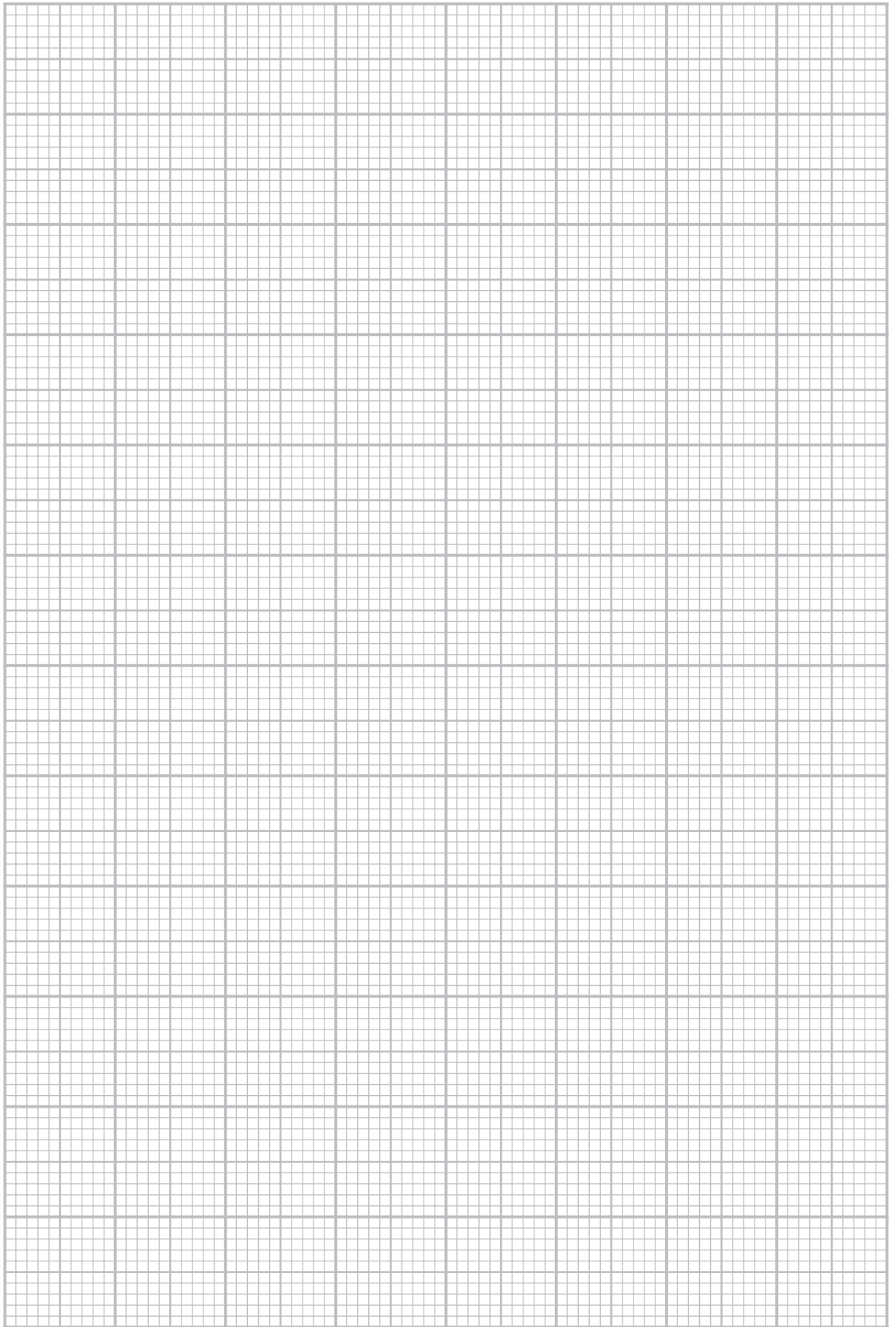
Gradient =



DO NOT WRITE IN THIS AREA

DO NOT WRITE IN THIS AREA

DO NOT WRITE IN THIS AREA



(iii) The gradient of the graph of $\log P$ against $\frac{1}{T}$ is given by

$$\text{gradient} = -\frac{X}{2.30k}$$

where X is a constant with unit joules, and k is the Boltzmann constant.

Determine the value of X in joules.

(3)

$X = \dots\dots\dots$ J

(b) Liquids boil when the saturated vapour pressure is equal to atmospheric pressure.

Determine the boiling point of the liquid in $^{\circ}\text{C}$ when the atmospheric pressure is 100 kPa.

(3)

Boiling point = $\dots\dots\dots$ $^{\circ}\text{C}$

(Total for Question 3 = 15 marks)

DO NOT WRITE IN THIS AREA

DO NOT WRITE IN THIS AREA

DO NOT WRITE IN THIS AREA



4 A student had two pieces of constantan wire, X and Y.

Wires X and Y had different diameters.

(a) The student measured the diameter d_x of wire X several times using a micrometer screw gauge.

(i) Explain one measuring technique he should use.

(2)

.....

.....

.....

.....

(ii) The student recorded the following measurements.

d_x / mm	0.31	0.32	0.31	0.33	0.30
-------------------	------	------	------	------	------

Determine the mean value of d_x and its uncertainty in mm.

(3)

.....

.....

.....

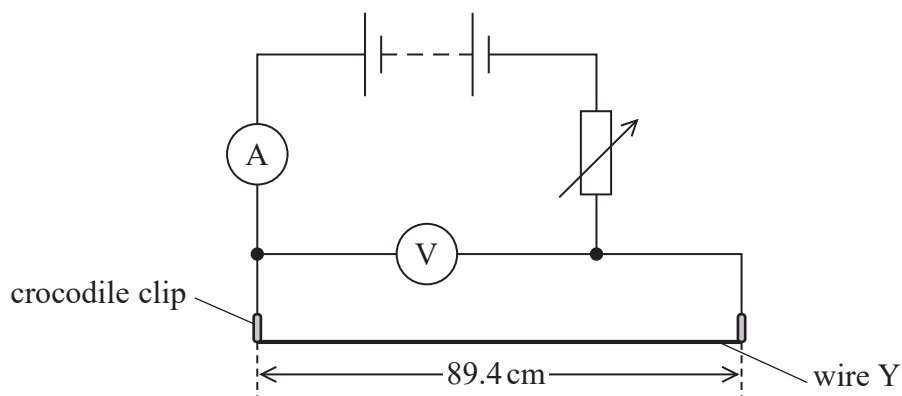
.....

Mean value of $d_x = \dots\dots\dots \text{mm} \pm \dots\dots\dots \text{mm}$



(b) The student measured the diameter d_Y of wire Y as $0.22 \text{ mm} \pm 0.01 \text{ mm}$.

He connected part of wire Y in a circuit as shown.



The student measured the potential difference V across the wire in the circuit and the current I in the wire.

He recorded the following values

$$V = 4.990 \text{ V} \pm 0.005 \text{ V}$$

$$I = 0.4570 \text{ A} \pm 0.0005 \text{ A}$$

The length of wire Y in the circuit was $89.4 \text{ cm} \pm 0.1 \text{ cm}$.

(i) Show that the resistivity ρ of the metal is about $5 \times 10^{-7} \Omega \text{ m}$.

(3)

(ii) Show that the percentage uncertainty in ρ is about 9%.

(3)



- (c) The student measured the resistances R_1 and R_2 of different lengths of wire Y using an ohmmeter. Each resistance was measured once.

The student's values are given in the table.

	Length / cm	Resistance / Ω
R_1	40.0	4.5
R_2	90.0	10.2

He calculated the resistance R_L for one metre of wire using the formula

$$R_L = 2 \times (R_2 - R_1)$$

Show that the percentage uncertainty in R_L is about 2%.

$$R_L = 11.4 \Omega$$

(3)

.....

.....

.....

.....

.....

.....



(d) The student wanted to confirm that the metal of the wire is constantan.

The student compared his calculated values of ρ and R_L to published values for constantan.

The values are shown in the table below.

	$\rho / 10^{-7} \Omega \text{ m}$	R_L / Ω
Calculated	$4.6 \pm 9\%$	$11.4 \pm 2\%$
Published	4.9	11.2

Comment on how well the student's calculated values confirm that the metal of the wire is constant.

You must include calculations in your answer.

(3)

(Total for Question 4 = 17 marks)

TOTAL FOR PAPER = 50 MARKS



List of data, formulae and relationships

Acceleration of free fall	$g = 9.81 \text{ m s}^{-2}$	(close to Earth's surface)
Boltzmann constant	$k = 1.38 \times 10^{-23} \text{ J K}^{-1}$	
Coulomb's law constant	$k = 1/4\pi\epsilon_0$ $= 8.99 \times 10^9 \text{ N m}^2 \text{ C}^{-2}$	
Electron charge	$e = -1.60 \times 10^{-19} \text{ C}$	
Electron mass	$m_e = 9.11 \times 10^{-31} \text{ kg}$	
Electronvolt	$1 \text{ eV} = 1.60 \times 10^{-19} \text{ J}$	
Gravitational constant	$G = 6.67 \times 10^{-11} \text{ N m}^2 \text{ kg}^{-2}$	
Gravitational field strength	$g = 9.81 \text{ N kg}^{-1}$	(close to Earth's surface)
Permittivity of free space	$\epsilon_0 = 8.85 \times 10^{-12} \text{ F m}^{-1}$	
Planck constant	$h = 6.63 \times 10^{-34} \text{ J s}$	
Proton mass	$m_p = 1.67 \times 10^{-27} \text{ kg}$	
Speed of light in a vacuum	$c = 3.00 \times 10^8 \text{ m s}^{-1}$	
Stefan-Boltzmann constant	$\sigma = 5.67 \times 10^{-8} \text{ W m}^{-2} \text{ K}^{-4}$	
Unified atomic mass unit	$u = 1.66 \times 10^{-27} \text{ kg}$	

Unit 1

Mechanics

Kinematic equations of motion	$s = \frac{(u + v)t}{2}$
	$v = u + at$
	$s = ut + \frac{1}{2}at^2$
	$v^2 = u^2 + 2as$

Forces	$\Sigma F = ma$
	$g = \frac{F}{m}$
	$W = mg$

Momentum	$p = mv$
----------	----------

Moment of force	moment = Fx
-----------------	---------------

Work and energy	$\Delta W = F\Delta s$
	$E_k = \frac{1}{2}mv^2$

Power	$\Delta E_{\text{grav}} = mg\Delta h$
	$P = \frac{E}{t}$
	$P = \frac{W}{t}$



Efficiency

$$\text{efficiency} = \frac{\text{useful energy output}}{\text{total energy input}}$$

$$\text{efficiency} = \frac{\text{useful power output}}{\text{total power input}}$$

Materials

Density

$$\rho = \frac{m}{V}$$

Stokes' law

$$F = 6\pi\eta rv$$

Hooke's law

$$\Delta F = k\Delta x$$

Elastic strain energy

$$\Delta E_{\text{el}} = \frac{1}{2}F\Delta x$$

Young modulus

$$E = \frac{\sigma}{\varepsilon} \text{ where}$$

$$\text{Stress } \sigma = \frac{F}{A}$$

$$\text{Strain } \varepsilon = \frac{\Delta x}{x}$$

DO NOT WRITE IN THIS AREA

DO NOT WRITE IN THIS AREA

DO NOT WRITE IN THIS AREA



Unit 2*Waves*

Wave speed

$$v = f\lambda$$

Speed of a transverse wave on a string

$$v = \sqrt{\frac{T}{\mu}}$$

Intensity of radiation

$$I = \frac{P}{A}$$

Refractive index

$$n_1 \sin \theta_1 = n_2 \sin \theta_2$$

$$n = \frac{c}{v}$$

Critical angle

$$\sin C = \frac{1}{n}$$

Diffraction grating

$$n\lambda = d \sin \theta$$

Electricity

Potential difference

$$V = \frac{W}{Q}$$

Resistance

$$R = \frac{V}{I}$$

Electrical power, energy

$$P = VI$$

$$P = I^2R$$

$$P = \frac{V^2}{R}$$

$$W = VIt$$

Resistivity

$$R = \frac{\rho l}{A}$$

Current

$$I = \frac{\Delta Q}{\Delta t}$$

$$I = nqvA$$

Resistors in series

$$R = R_1 + R_2 + R_3$$

Resistors in parallel

$$\frac{1}{R} = \frac{1}{R_1} + \frac{1}{R_2} + \frac{1}{R_3}$$

Particle nature of light

Photon model

$$E = hf$$

Einstein's photoelectric equation

$$hf = \phi + \frac{1}{2}mv_{\max}^2$$

de Broglie wavelength

$$\lambda = \frac{h}{p}$$



Unit 4*Further mechanics*

Impulse

$$F\Delta t = \Delta p$$

Kinetic energy of a non-relativistic particle

$$E_k = \frac{p^2}{2m}$$

Motion in a circle

$$v = \omega r$$

$$T = \frac{2\pi}{\omega}$$

$$a = \frac{v^2}{r}$$

$$a = r\omega^2$$

Centripetal force

$$F = ma = \frac{mv^2}{r}$$

$$F = mr\omega^2$$

Electric and magnetic fields

Electric field

$$E = \frac{F}{Q}$$

Coulomb's law

$$F = \frac{Q_1 Q_2}{4\pi\epsilon_0 r^2}$$

$$E = \frac{Q}{4\pi\epsilon_0 r^2}$$

$$E = \frac{V}{d}$$

Electrical potential

$$V = \frac{Q}{4\pi\epsilon_0 r}$$

Capacitance

$$C = \frac{Q}{V}$$

Energy stored in capacitor

$$W = \frac{1}{2} QV$$

$$W = \frac{1}{2} CV^2$$

$$W = \frac{1}{2} \frac{Q^2}{C}$$

Capacitor discharge

$$Q = Q_0 e^{-t/RC}$$



Resistor-capacitor discharge

$$I = I_0 e^{-t/RC}$$

$$V = V_0 e^{-t/RC}$$

$$\ln Q = \ln Q_0 - \frac{t}{RC}$$

$$\ln I = \ln I_0 - \frac{t}{RC}$$

$$\ln V = \ln V_0 - \frac{t}{RC}$$

In a magnetic field

$$F = Bqv \sin \theta$$

$$F = BIl \sin \theta$$

Faraday's and Lenz's laws

$$\mathcal{E} = \frac{-d(N\phi)}{dt}$$

Nuclear and particle physics

In a magnetic field

$$r = \frac{p}{BQ}$$

Mass-energy

$$\Delta E = c^2 \Delta m$$

DO NOT WRITE IN THIS AREA

DO NOT WRITE IN THIS AREA

DO NOT WRITE IN THIS AREA



P 7 1 8 8 2 A 0 1 9 2 4

Unit 5*Thermodynamics*

Heating $\Delta E = mc\Delta\theta$

$$\Delta E = L\Delta m$$

Ideal gas equation $pV = NkT$

Molecular kinetic theory $\frac{1}{2}m\langle c^2 \rangle = \frac{3}{2}kT$

Nuclear decay

Mass-energy $\Delta E = c^2\Delta m$

Radioactive decay $A = \lambda N$

$$\frac{dN}{dt} = -\lambda N$$

$$\lambda = \frac{\ln 2}{t_{1/2}}$$

$$N = N_0 e^{-\lambda t}$$

$$A = A_0 e^{-\lambda t}$$

Oscillations

Simple harmonic motion $F = -kx$

$$a = -\omega^2 x$$

$$x = A \cos \omega t$$

$$v = -A\omega \sin \omega t$$

$$a = -A\omega^2 \cos \omega t$$

$$T = \frac{1}{f} = \frac{2\pi}{\omega}$$

$$\omega = 2\pi f$$

Simple harmonic oscillator $T = 2\pi\sqrt{\frac{m}{k}}$

$$T = 2\pi\sqrt{\frac{l}{g}}$$



Astrophysics and cosmology

Gravitational field strength $g = \frac{F}{m}$

Gravitational force $F = \frac{Gm_1m_2}{r^2}$

Gravitational field $g = \frac{Gm}{r^2}$

Gravitational potential $V_{\text{grav}} = \frac{-Gm}{r}$

Stefan-Boltzmann law $L = \sigma AT^4$

Wien's law $\lambda_{\text{max}}T = 2.898 \times 10^{-3} \text{ m K}$

Intensity of radiation $I = \frac{L}{4\pi d^2}$

Redshift of electromagnetic radiation $z = \frac{\Delta\lambda}{\lambda} \approx \frac{\Delta f}{f} \approx \frac{v}{c}$

Cosmological expansion $v = H_0 d$

DO NOT WRITE IN THIS AREA

DO NOT WRITE IN THIS AREA

DO NOT WRITE IN THIS AREA



DO NOT WRITE IN THIS AREA

DO NOT WRITE IN THIS AREA

DO NOT WRITE IN THIS AREA

BLANK PAGE



DO NOT WRITE IN THIS AREA

DO NOT WRITE IN THIS AREA

DO NOT WRITE IN THIS AREA

BLANK PAGE



DO NOT WRITE IN THIS AREA

DO NOT WRITE IN THIS AREA

DO NOT WRITE IN THIS AREA

BLANK PAGE

